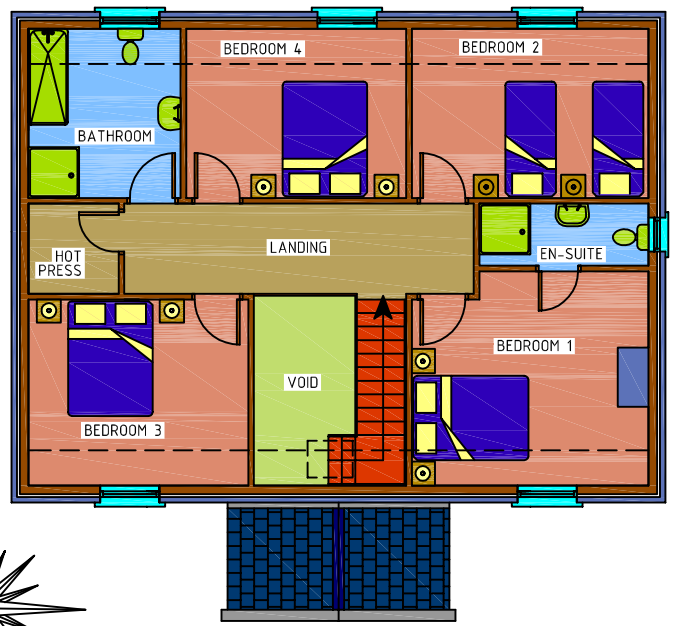
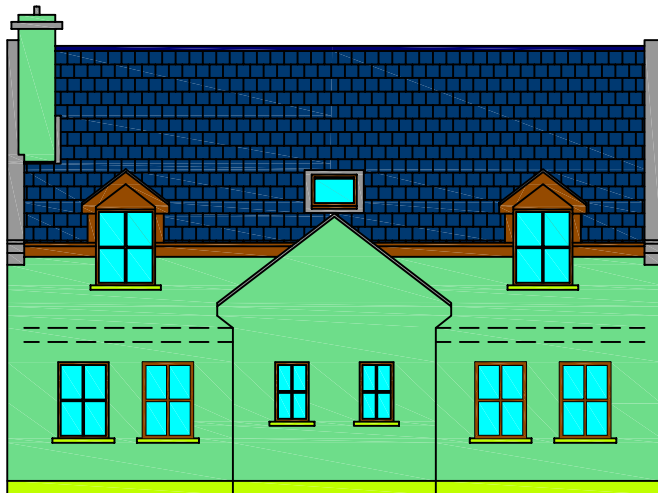
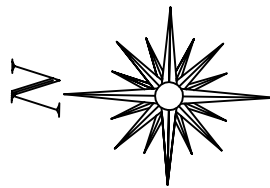


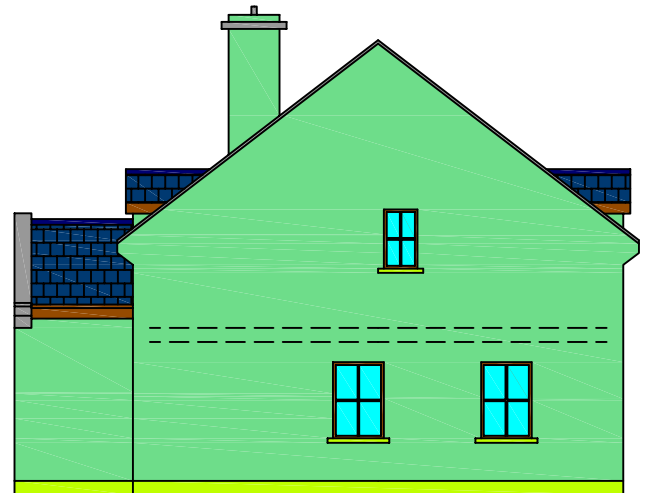
GROUND FLOOR



FIRST FLOOR



FRONT ELEVATION



SIDE ELEVATION

2 STOREY 2

4 BEDROOM

GROUND FLOOR AREA = 95.4 sq/m

FIRST FLOOR AREA = 89.1 sq/m

OVERALL ALL FLOOR AREA = 184.5 sq/m

LENGTH OF FRONT ELEVATION = 11.6m

APPROX ROOM SIZES

KITCHEN/DINING:	8.2 X 3.6
LIVING:	3.9 X 4.4
LOUNGE:	4.2 X 4.4
UTILITY:	2.7 X 2.4
BEDROOM 1:	4.2 X 3.8
EN/SUITE:	3.0 X 1.1
BATHROOM:	2.7 X 3.0
BEDROOM 2:	4.2 X 3.0
BEDROOM 3:	3.9 X 3.3
BEDROOM 4:	3.9 X 3.0



GREEN BUILD TIMBER FRAME

Rosehill,
Ballinacurra.
Midleton,
Co. Cork.

Tel. 021 4630659
E-mail: info@gbc.ie

BROCHURE DESIGN

Drawing Title:

Ballybunion

Date:

21/02/11

Revision:

-

Drawing No:

GBC-2ST2